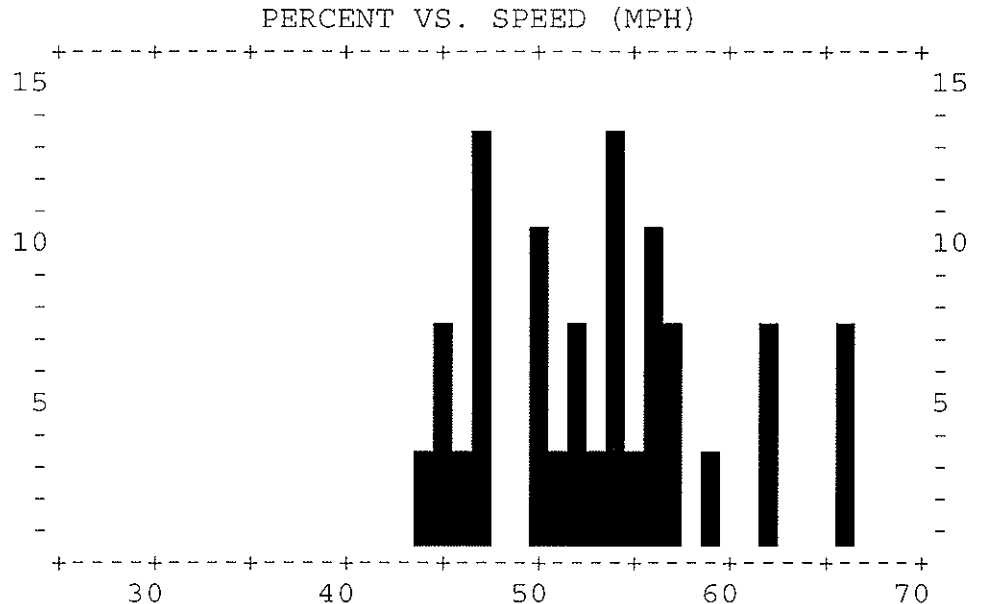
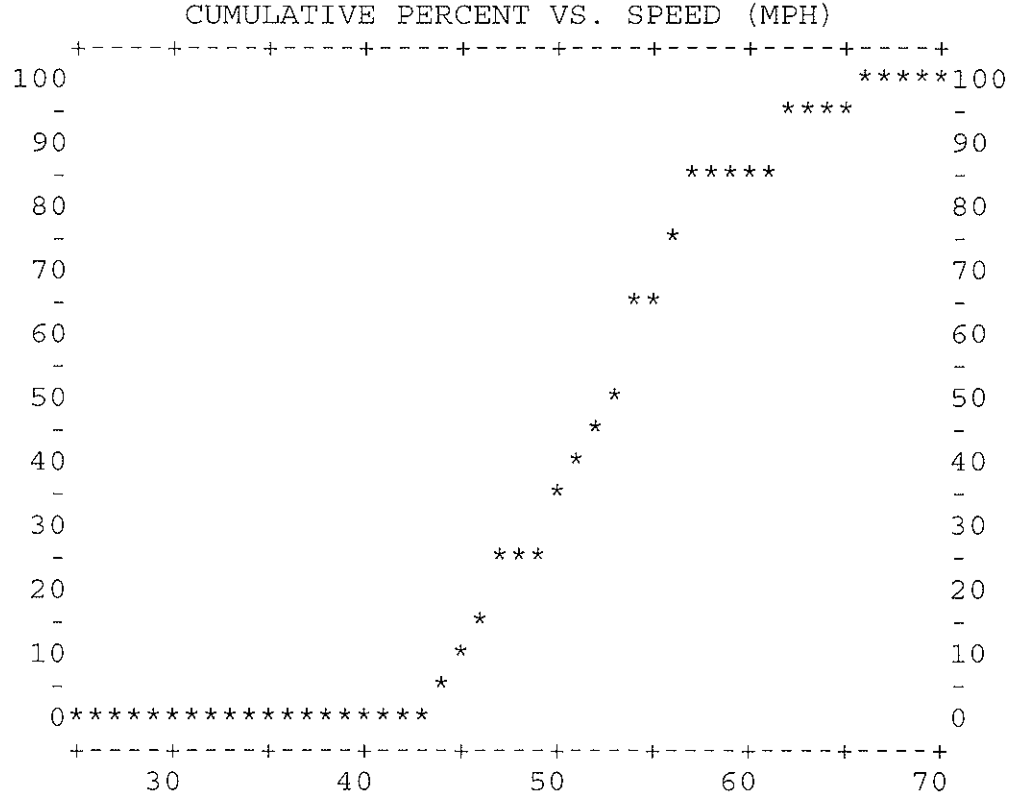


Traffic Studies
 USH 12: South of CTH UU

DIRECTION(S).....Eastbound
 DATA COLLECTED ON.. 7/16/2007
 BEGINNING AT.....10:01
 POSTED SPEED LIMIT.45 MPH
 REPORT DATE..... 7/16/2007

50TH PERCENTILE SPEED.....54
 85TH PERCENTILE SPEED.....59
 10-MPH PACE SPEED.....47 through 56
 PERCENT IN PACE SPEED..... 63.3
 PERCENT OVER PACE SPEED..... 23.3
 PERCENT UNDER PACE SPEED..... 13.3
 RANGE OF SPEEDS.....44 to 66
 SPEEDS OBSERVED.....30
 AVERAGE SPEED.....53.1

MPH	NO.	PCT.	CUM. PCT.
<25	0	0.0	0.0
25	0	0.0	0.0
26	0	0.0	0.0
27	0	0.0	0.0
28	0	0.0	0.0
29	0	0.0	0.0
30	0	0.0	0.0
31	0	0.0	0.0
32	0	0.0	0.0
33	0	0.0	0.0
34	0	0.0	0.0
35	0	0.0	0.0
36	0	0.0	0.0
37	0	0.0	0.0
38	0	0.0	0.0
39	0	0.0	0.0
40	0	0.0	0.0
41	0	0.0	0.0
42	0	0.0	0.0
43	0	0.0	0.0
44	1	3.3	3.3
45	2	6.7	10.0
46	1	3.3	13.3
47	4	13.3	26.7
48	0	0.0	26.7
49	0	0.0	26.7
50	3	10.0	36.7
51	1	3.3	40.0
52	2	6.7	46.7
53	1	3.3	50.0
54	4	13.3	63.3
55	1	3.3	66.7
56	3	10.0	76.7
57	2	6.7	83.3
58	0	0.0	83.3
59	1	3.3	86.7
60	0	0.0	86.7
61	0	0.0	86.7
62	2	6.7	93.3
63	0	0.0	93.3
64	0	0.0	93.3
65	0	0.0	93.3
66	2	6.7	100
67	0	0.0	100
68	0	0.0	100
69	0	0.0	100
70	0	0.0	100
>70	0	0.0	100



Traffic Studies

USH 12: South of CTH UU

ADMINISTRATIVE SUMMARY

=====

1. Vehicular Speed Data Observed

Date and Time: July 16, 2007 at 10:01

Posted Speed Limit at Time of Study: 45 MPH

85th Percentile Speed: 59 MPH

10 MPH Pace: 47 through 56 MPH

Average Speed: 53.1

Subsequent to this study no change in the speed limit was made.

2. Accident Data

Street Classification: none specified

Accident Information for This Location:

Accident Information for Streets of Same Classification:

3. Unusual Conditions at This Location

Investigator: LMN

Date: 7/16/2007